

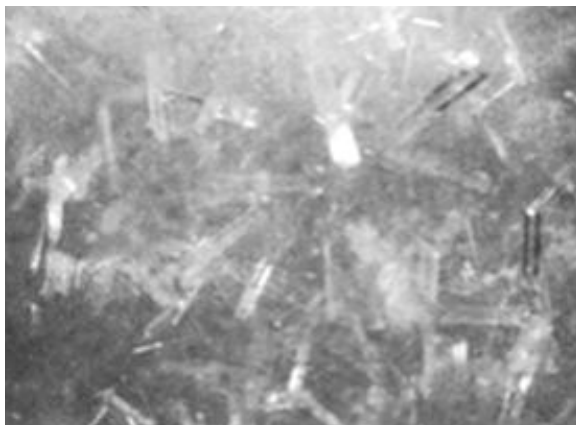


CHEM-CRETE SofiX[®] CCC 100

Hydrophilic Moisture and Vapor Blocker

PRODUCT DESCRIPTION

Chem-Crete SofiX CCC100 is a unique water based blend of catalyzed chemicals that permanently eliminate moisture transmission through concrete structures up to 10 lb. / 1000ft /24 Hours. The moisture blocking mechanism of Chem-Crete SofiX CCC100 occurs as a result of a crystallization process that takes place within the concrete capillaries, voids and pores. The Chem-Crete SofiX CCC100 produces water insoluble hydrophilic crystals. The affinity of the crystals to moisture is extremely high. In the presence of hydrostatic pressure or under wet conditions, the crystals absorb moisture and rapidly swell to block concrete pores and capillaries, preventing moisture penetration. The very low viscosity of Chem-Crete SofiX CCC100 allows it to penetrate deeply into a concrete substrate. The product protects preserves and waterproofs without any surface film formation or color change.



FIELDS OF APPLICATION

Concrete Floors.
Foundations and Slabs
Slabs to receive Carpet
Industrial Plants
Slabs to receive Tile
Subway Tunnels
Mold Abatement

PRODUCT FEATURES

One component, easily applied by brush, roller, low pressure sprayer or airless sprayer.
Low viscosity, excellent penetration into deep pores.
Environmentally safe, non-toxic and odorless.
Reduces freeze-thaw damage.
Resists acid rain staining.
Easy to Apply
Ultra violet light and salt water spray exposure had no adverse effect on Chem-Crete SofiX CCC100 treated concrete.

Decreases the surface moisture content in concrete for a better and longer lasting application of floor toppings and surface coatings.
Eliminates silicate dusting.
Creates permanent internal waterproofing.
Treatable Substrates include: Concrete, concrete block, mortar, plaster, stucco, stone, exposed aggregate or any sand, aggregate combination and as a sealer/waterproofing for freshly placed concrete.

PACKAGING

Product

**Chem-Crete
SofiX CCC100**

Packaging

5 gal pail and 55 gal drum
(19 L pail and 208 L drum)

TECHNICAL DATA

Specific Gravity	1.07
Freeze Temperature	25°F (-4 °C)
Boiling Point	214 °F (101 °C)
Freeze Harm	Complete
For Cleaning	Water
Color	Clear
Odor	None
Toxicity	None
Flammability	None
Fumes During Treatment	None
Environmental Hazards	None
Thinners Required	None
Number Of Coats Required	Two coats
Drying Time At 77°F (25 °C)	2-3 hours

Applicable Standards:

Meets or exceeds:

ASTM C-666 Freeze thaw testing

NCHP#244 "Soak Test" Rev.

ASTM D3359: 28% increase in epoxy adhesion or surface coating

Hardening Test ASTM C-42: 40% increase in compressive strength at 14 days over untreated samples. 35% increase at 28 days over untreated samples.

Weathering Test ASTM G-23: Ultraviolet light and water spray exposure had no adverse effect on Chem-Crete SofiX CCC100 treated samples.

ASTM C-309 Curing type 1, class A
Curing Temperatures ATEC 25-01831
Penetration Test: Ink Test, 178mm depth
Permeability / Capillarity: 88.151.518

APPLICATION DATA

Methods of Application: Spray, roll or brush.
Tools Needed: Spray equipment, roller, brush, bristle broom or squeegee.
Surface Preparation: Surface must be clean, and free of paint, sealer, oil, adhesive, curing compound, form release agent and/or anything that will not allow Chem-Crete SofiX CCC100 to penetrate the substrate. Areas which require cleaning must be cleaned by scrubbing, pressure washing or other methods to remove any surface dust, dirt or other contaminants. Chem-Crete SofiX CCC100 may be applied to damp surfaces as long as no standing water or puddles are present. Heavy contaminated areas must be cleaned using Chem-Crete CONCLEAN CCC 060 biodegradable concrete cleaner and a pressure washer to help remove deeply penetrated areas.

Coverage:

Two coat application required, approximately 200 ft² per gal. per coat (5 m² per liter) of Chem-Crete SofiX CCC100. Coverage depends on the temperature and porosity of the concrete.

Limitations:

Do not apply Chem-Crete SofiX CCC100 in the following cases:
When temperature falls below 40°F (5°C)
To areas previously treated with curing or sealing agents unless these coating have been removed by chemical or mechanical means.

CLEANING

Clean all equipment, tools with fresh clean water immediately after use.

STORAGE

Two year shelf life when stored in cool, dry place in unopened drums.
Always agitate or stir the bucket or drum before using.
Do not allow product to freeze.

SAFETY PRECAUTIONS

As with all construction chemical products, adequate precautions and care must be taken during usage and storage. Avoid direct contact with foodstuff, eyes, skin, and mouth. Any direct contact with skin, eyes, etc. should be washed thoroughly with clean running water.
Always wear protective goggles and gloves. In case of eye contact, flush for 15 minutes with warm water. **Keep out of reach of children.**

TECHNICAL ASSISTANCE

Please contact International Chem-Crete Corporation for Technical Personnel.

WARRANTY

LIMITED WARRANTY: International Chem-Crete Inc. warrants that, at the time and place we make shipment, our materials will be of good quality and will conform to our published specifications in force on the date of acceptance of the order.

DISCLAIMER: The information contained herein is included for illustrative purposes only and, to the best of our knowledge, is accurate and reliable. International chem-crete Inc. is not under any circumstances liable in connection with the use of information. As International Chem-Crete Inc. has no control over the use to which others may put its products, it is recommended that the products be tested to determine the suitability for specific applications and/or our information is valid in a particular circumstances. Responsibility remains with the architect or engineer, contractor and owner of the design, application and proper installation of each product. Specifier and user shall determine the suitability of the product for specific application and assume all responsibility in connection therewith. MN/081006.

Distributed By:



ConAsph
Environmental Coatings Ltd.

#8 6630 71 Street
Red Deer, AB T4P 3Y7
Email: conasph@conasph.ca

Phone: 403-341-6900
Fax: 1-877-787-1605
Toll Free: 1-877-630-8784